

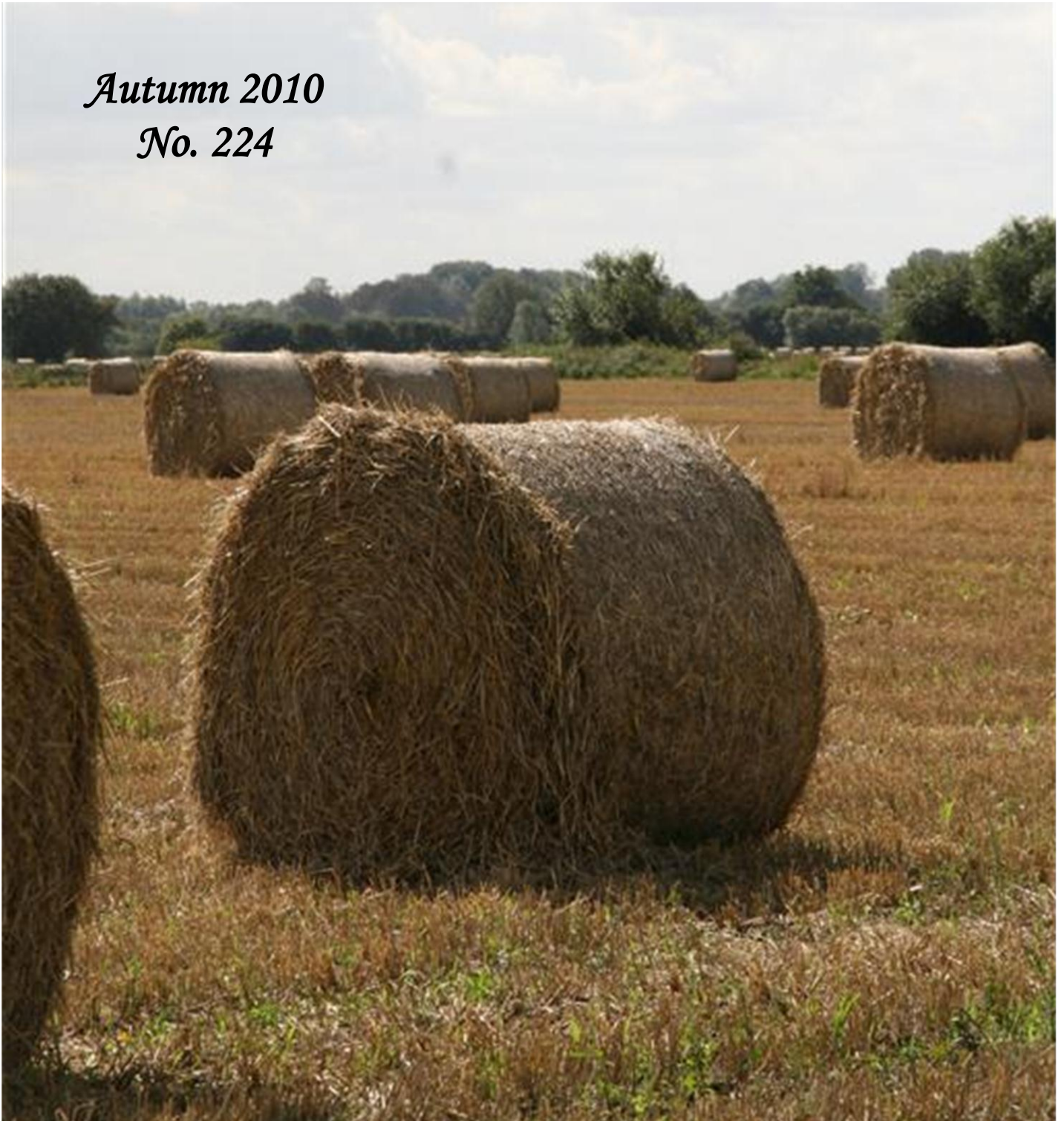
WATERBEACH COMMUNITY ASSOCIATION

Beach News

WATERBEACH - LANDBEACH - CHITTERING

Autumn 2010

No. 224



BEACH NEWS

Journal of Waterbeach Community Association
www.waterbeach.org

'Beach News' is produced and distributed entirely by non-professional volunteers and is delivered free to over 2,500 local homes four times a year.

The Association welcomes contributions on subjects of local interest but reserves the right to edit or omit articles without notice at their discretion.

Views expressed are not necessarily those of the Association and advertisements published in 'Beach News' are subject to individual agreements between advertisers and readers and the Association cannot be held responsible for the quality of goods or services supplied.

Articles for inclusion in 'Beach News' should be emailed to
beachnews@waterbeach.org

Please refer any problems with advertisers to
Jacqui Rabbett 01223 860993.

The nature of production makes publication dates uncertain but editions should appear as follows:

No. 225 (Winter) 4th December 2010 – copy by 12th November 2010
No. 226 (Spring) 5th March 2011 – copy by 11th February 2011

Whilst every effort will be made to adhere to this schedule unforeseen circumstances may delay or restrict publication or delivery and no responsibility can be accepted for late or non-appearance.

WHERE TO SEND YOUR ARTICLE

If you would like information on your group to be published in Beach News, or have some interesting news to share, write an article and send it along. Email it to **beachnews@waterbeach.org** or send it to 5 Spurgeons Ave, Waterbeach, Cambridge CB25 9NU or to Jacqui Rabbett at Waterbeach School.

If you have posters detailing one off local events that you would like put up in the Associations notice boards on Waterbeach Green or School entrances, post them at 5 Spurgeons Avenue, Waterbeach. (Maximum size poster A4 in portrait format)

Front cover – Car Dyke Road– September 2010

Contents

Community Association	1	The Farmland Museum	12
Feast 2010	2	Jazzercise	12
Day Centre for the Elderly	4	Wicken Fen	13
Waterbeach Turbary Charity	4	Message From Cllr. James Hockney	14
News From Cllr. Peter Johnson	5	Gardening Club	16
Yard Sales	5	A View From Shire Hall	17
Library Facilities	6	Waterbeach Community Players	18
Waterbeach United Charities	6	Blue Bins	18
Waterbeach Barracks	7	Landbeach Music Nights	20
Waterbeach WI	8	Request For Volunteers	21
Royal British Legion	8	Filming At Clayhithe	21
Beach Social Club	9	A Stroll In The Park	23
Waterbeach United Charities	10	Children's Page	24
Toddler Playgroup	11		

Community Association



AGM - The Community Association AGM was held on Monday 13th September in the Community Room. The Chair reported on the events organised during the year including Carols on the Green on Christmas Eve, the 60 Plus Lunch Party in January and the Feast. It became very apparent that more help is needed with the organisation of Feast Day, before, during and after. If you would like to be involved or can offer assistance next year, please contact Jacqui Rabbett: email wcachair@waterbeach.org or tel. 01233 860993. The officers were elected; Chairperson - Jacqui Rabbett, Treasurer - Mike Sharp and the post of Secretary will be shared by Pam Clack and Jacqui Rabbett.

60 Plus Afternoon Tea - Following the success of the 60 Plus Lunch Party in January, we once again joined with Waterbeach Primary School to offer an afternoon of entertainment. Our residents over 60 were invited into the school on 30th June and enjoyed entertainment from the children in Years 3 and 4 who performed 'The Creation of the Night Sun', based on a traditional Mexican story. It was a fantastic performance of singing, dancing and acting by some very talented children. The afternoon will be rounded off with tea and cakes kindly provided by the WI and Waterbeach Wives.

Feast Collection - The street collection from the Feast raised £426 and this will be distributed to support groups and projects within the community area. Applications are welcomed from both existing and new groups, e.g. for a specific project or set up costs. If you or your group would like to be considered for a donation please forward an application to Jacqui Rabbett 9 Providence Way, Waterbeach, Cambs, CB25 9QH by 29th October 2010.

Feast 2010

Back in June we were very fortunate to have one of the few warm sunny days of summer for the Waterbeach Feast. From the feedback we have received there was an overwhelming feeling that Feast Day was a great success and it wasn't affected by the England match in the World Cup later in the day.

This year the parade was due to be lead by Cambourne Bloco Group, but unfortunately they informed us three days before the Feast that they were no longer able to attend. This caused much distress to the Feast Committee who then had to spend several hours phoning around to arrange other possible bands. We made contact with the Arco Iris Samba Band, who has attended the Feast on previous occasions, and they agreed to stand in at the last minute with as many members as they could gather together at such short notice. We were extremely grateful to Arco Iris and received many positive comments about their performance.



This year theme was 'Something beginning with D....' and we saw decorators, Disney characters, disco, deep sea divers and even Dorothy and her dog! The shield for the best decorated infant float went to the 'Diggers



and Dumpers' from Waterbeach Community Playgroup. There were joint winners for the junior float 'Dancing' by Waterbeach Primary School PTA and 'Daffodils' by Rainbows. The adult category was won by Tony Shipp disguised as a Dog and the Friends and Family award went to Pam Clack, Deborah Watts and

Abi Rabbett for 'Dopey Dragons'. The Green was also covered in 'D's' and the winners of the best decorated stalls were Waterbeach Toddler Playgroup for the juniors and Waterbeach Wives for the adults.

Once again we ran a photograph competition for all ages to take part in. We asked residents of Waterbeach, Landbeach and Chittering to submit photographs in line with this years theme.

The winner in the Under 5's category was Felix Smith, the 5-11years was won by Noah Smith, Chloe Fish won in the 12-17 years



category and the Over 18's winner was Tim Gent. The trophy for the Overall Winner was awarded to Felix Smith.

Congratulations to all our winners and a big thank you to our judges, Gail and Michael Attle (Bannold) and Andrew Hind.

A huge thank you must go to Townsends Light Blue Cycle Centre for their generous donation of two bicycles for our raffle. We would also like to thank the following companies and groups who kindly donated money or gifts to support Waterbeach Feast; Morris Homes, The Sun, Center Parcs, Planet Zoom, Strikes Bowling, Waterbeach Wives, Macmillan Nurses, Panther Taxis, Waterbeach Day Centre for the Elderly, Tesco, Waterbeach Baptist Chapel, Scotsdales Garden Centre, Waterbeach PTA, St John's Church, Waterbeach Community Playgroup, Sainsbury's, Waterbeach Village Society, Waterbeach Community Players, Waterbeach WI and Donarbon.



A huge thank you must go to Jacqui Rabbett, Mark & Pam Clack and Mike Sharp for all the incredible hard work and dedication they put in, before, during and after, to make Feast Day such a success. Thank you also to those who helped on the day, Ian MacKriell, Sarah and David

Smart, Celia Tuck, Steve Watts, Alison Blackaby, Bill Bullivant, Tony Shipp, Abi Rabbett, Waterbeach Brass, Waterbeach Troop Army Cadet Force and the 25 Engineer Group.

The Feast Committee received lots of emails and cards congratulating us on such a successful and enjoyable day, which is very much appreciated. The date for next year's Feast has been set for Saturday, 11th June 2011.

Day Centre for the Elderly

We invite all those aged 60 years or over from Waterbeach, Chittering and Landbeach to join us at the Day Centre in the Community Rooms, Denson Close, twice a week on Monday and Wednesday from 11am to 3pm.

The original Service Agreement sums up what our aims are: "To provide social activities, mutual support and companionship as well as a cooked lunch and refreshments for older people living on their own or couples". So if this is what you are seeking don't hesitate any longer, come along and be assured of a warm welcome with tea/coffee and biscuits on arrival. Bring you knitting and 'knit and natter' or you can join in games of dominoes, cards etc. or just read to chat until it is time for a two course lunch. This is followed by a game of bingo and the day ends with tea/coffee and cakes. We also provide transport where necessary and all this for a charge of £3.50 per day.

The icing on the cake is that we also arrange a number of outings and parties with entertainment over the year.

Apart from our cook who is paid a small retainer we are all volunteers and we are always looking for more helpers, so if you can spare a couple of hours either Monday or Wednesday we would be pleased to see you.

We hope this has made you want to join our 'family' and is so, please contact Mary Longstaff (Chairperson) on 01223 564666 or Bill Bullivant on 01223 862506. We look forward to seeing you.

Waterbeach Turbary Charity (Reg No 201529)

Applications for Heating Grants

Applications are invited for heating grants from the above Charity. Please apply in writing, stating your name, address and telephone number with the reasons for the application. All details given are confidential.

Applications are accepted from residents (regardless of age) from Chittering and Waterbeach ONLY. Applicants may be on low incomes, single parents etc. If you think the Charity can help, please consider applying.

Applications must be on a need basis, and may not be accepted. In order that funds of the Charity can be targeted at those most in need, candidates with savings over £6,000 should not apply.

Please send details to:

Mrs S Wilkin, The Secretary, Waterbeach Turbary Charity,
25 Payton Way, Waterbeach, CB25 9NS

Closing date for applications is 20 November 2010

News From Cllr. Peter Johnson

First of all I would like to say a big 'Thank You' to you all for having the confidence to vote for me in the May elections both for the District Council and the Parish Council, it makes me feel very proud as it is an honour to represent you all at South Cambridgeshire District Council. As always I will promise to do my best for each and everyone in Waterbeach, Landbeach, and Chittering.

Well the new Community/Youth Club is slowly taking shape, but there have been delays as I believe a water pipe had to be re-routed and so instead of it being ready by the end of the year it looks as though it will be early next year, but they do say the best things are worth waiting for and I certainly hope this will be the case in this instance.

The Public Art Committee that was formed following a public meeting in February 2009 has now moved on to form the Waterbeach Cultural Collective (WCC). The WCC is a constituted voluntary group and includes individuals with skills in arts management, education and arts practice and is chaired by the director of a visual arts centre. I am sure that this will make the best use of the S106 Public Art contribution to the benefit of all of the village.

This year we are seeing a change in the High Street view following the demolition of No 19 High Street and the new houses being built in its place, I do hope that some people do take photographs of our village and the changes that take place so records are kept for our future generations.

Once again contact me by whatever means you prefer, telephone 01223 560918(Home), 07947475549 (Mobile), e-mail cllr.Johnson@scambs.gov.uk or knock on my door, and please remember I am here for all of you.

Yard Sales

Many thanks to everyone who supported us by having a yard sale on 10th July. Hope you all had a good day and that nobody melted!

The money raised was £400. £250 went to the Community Playgroup and WASPS, and £150 went to Shirley Randall for the wonderful work she does for Arthritis.

Thanks also go to everyone at the Waterbeach Wives group who baked cakes or helped in the Church Room. Also without the help of my daughter Vicky and partner Graham, I couldn't make it happen. Thanks again.

Jan Gilzean

Library Facilities

Public Consultation Ends 30th September

You can use your Cambridgeshire Libraries ticket (or join) at Waterbeach Independent Lending Library, on the Waterbeach School site. It is open on Mondays, Wednesdays, Fridays and Saturdays - see our display advertisement for details.

As you are probably aware, Cambridgeshire County Council is planning large budget cuts, as requested by Central Government. Some of these cuts will have to come from the library service and as a consequence a major Library Service Review is being undertaken. There is still just time for you to participate in the associated public consultations - which end on 30th September – either by completing a Library Service Review questionnaire or by attending a public meeting or display. For more information visit <http://www.cambridgeshire.gov.uk/leisure/libraries>, or ask at any library.

New books to support the summer reading challenge were purchased with the aid of funding from Waterbeach Parish Council. More than forty children have participated in this activity.

We would welcome more volunteers to help in the library. If you could assist for two hours once a month, or more frequently, please contact Jill Briggs (860969) or Kate Grant (511455) for more information.

It seems certain that cuts to library service funding will result in mobile library visits to Waterbeach and Landbeach being reduced, perhaps to once a month, with effect from October. For the latest information, see <http://hipweb.cambridgeshire.gov.uk/mobiles/>, or ask at any library

Waterbeach United Charities (Reg No 201528)

(Clause 4 (2) grant)

Organisations are invited to apply for a grant from the above Charity subject to funds being available at the end of the financial year (December 2010).

Applications to be submitted in writing clearly stating the reasons for the grant and they should include details of any fund raising efforts that have been made. Closing date will be 31 December 2010. These grants will be considered early in the New Year.

Not all applications may be successful and the Trustees' decision will be final.

Please send details to: Mrs S Wilkin, The Secretary,
Waterbeach United Charities, 25 Payton Way, Waterbeach, CB25 9NS

Waterbeach Barracks



RAF Waterbeach – peacetime use

In September 1945 after the end of WW2, the Station was transferred to No 47 Group Transport Command and two squadrons operated Liberators on trunk-route flying. These were later replaced by a squadron of Yorks which continued trunk-route operations to the Middle East and Far East. By 1946 a Blind Approach Beacon System (BABS) plus a high frequency direction finding (HF/DF) station were installed. 51 Squadron left early in 1948 and were replaced by four Dakota squadrons of 46 Group, which participated in the Berlin Airlift in the summer of 1948.

In March 1950 runway re-structuring was carried out by Mowlem, they also created two concrete aprons in front of the technical site and a number of concrete blast walls were erected at selected dispersal points, combining jet blast protection with an engine noise barrier.

Fighter Command moved in two Meteor squadrons in May 1950, the first jets to fly here. 56 Squadron was selected to introduce the Supermarine Swift but it proved troublesome and was withdrawn after a year. Eventually both squadrons converted to Hunters. Venom night fighters were present for two years and Javelins for three years. The final occupants were two Hunter squadrons of 38 Group operating in the ground attack and transport escort roles. A Hunter stands outside the gates of Waterbeach Barracks today - our Gate Guardian - it is on loan from IWM Duxford.



In 1963 the station was transferred to RAF Maintenance Command and became the base of the Airfield Construction Depot (5001 and 5003 Squadrons). The airfield was on care and maintenance, although occasionally it was used for manoeuvres and by training aircraft for touch and go.

RAF Waterbeach Museum has two new displays on Transport Command and on Fighter Command at Waterbeach. The museum is open from April to September, by appointment only, on application to the Guardroom (01223 204421).

Waterbeach WI



Women's
Institute

Waterbeach WI have had a busy summer. We held a very successful accessories stall at the Feast. Had a visit to The Manor at Hemingford Grey and marvelled at the quilts made by Lucy Boston as well as savouring the house and its surrounds where the Green Knowe books were written also by Lucy Boston. The Manor House is the oldest continually inhabited house in England and still has some original features from the 12th century. We also along with friends hosted a Tea at Three in aid of the Arthur Rank Hospice and raised £145 for this very worthwhile charity. Thanks to all who supported this event. Our speakers have ranged from A World in Miniature, Gerald Durrell's Jersey Zoo and the story of Bees, Beekeeping and the Gardener.

Our weekday walking group continues to grow and we have had walks from the Lazy Otter to Stretham Beam engine and also from Anglesey Abbey mill. Non-members are very welcome to join us on these walks and at any of our meetings.

This month (*September*) we have an in house craft evening where we are all going to try and make a collage.

October 14th we welcome a speaker from 'Medicines Sans Frontieres' on the work done by this charity.

November 11th we have a demonstration and talk by Practical Florist Amy Jones.

If you would like any further information about the Waterbeach W.I. please contact the President, Mrs Jane Gibb (721194)

Royal British Legion

This year 2010/11 the Royal British Legion celebrates its 90th Jubilee and we look forward to the future in helping the serving and ex-service people. The Legion has embarked on building, and staffing with qualified people, four new Convalescence/Rehabilitation Homes across the country to help today's serving/ex-service men injured, to recover and assist them in their future lives.

Remembrance Day this year will see services at Landbeach at 9.15am, and at Waterbeach the parade will leave the Green at 2.30pm for a service at St. John's Church.

Due to illness of some of our elderly collectors, we require new collectors in both Waterbeach and Landbeach. Please contact N. Foster 474622 to help.

Beach Social Club

Waterbeach Watering Hole Olympics - As you will probably know by now, in the week running up to Feast Day, the pubs in Waterbeach got all competitive and staged their own Olympics. We had such fun and it was really nice meeting new people. The winners of each competition were as follows:-

Relay & drinking race	Beach Social Club
Pool	The White Horse
Quiz Night	The White Horse
Darts	Beach Social Club
Rounders	Beach Social Club
Tug of War	The White Horse
Victoria Sponge	The Sun

Deciding the winner went down to the last competition, the best Victoria Sponge, with The White Horse & Beach Social Club neck & neck, Jools from The White Horse was pacing up & down like an expectant Father, one cigarette after another, nails bitten down to the quick, The White Horse won on the day as their Victoria Sponge got second and ours got 3rd. Well done The White Horse who were the overall winners. The winning sponge incidentally was baked by Gary Paul, so if you need a cake for a special occasion.....

Harvest Festival Auction - The Harvest Festival Auction this year will be held on Saturday 25th September, hosted by the wonderful Waterbeach Brass. If you have anything you would like to put in the Auction to raise money for our charities please leave the donated items at the Club in the week running up to this great night, also don't be afraid to come along and bid on items, usually some great bargains to be had.

Charity - Every year, we at the Club raise money to benefit local charities, this year it is East Anglian Air Ambulance & Waterbeach Toddler Playgroup. If you are a member of the Club and your charity is local and need funds, please attend the AGM and nominate your charity. The attendees of the AGM will decide on the night which charities will be supported for the coming year, it could be you ... Charity cheque presentation night is on Saturday 9th October please come and support this special evening with entertainment by STINGRAY.

Committee - Our AGM will be in October 2010. The positions of Secretary and Chairperson are up for re-election as well as 5 general committee positions. If you would be interested in applying for any of these positions and are a member, please do so, by putting your name on the forms displayed in the Social Club 3 – 4 weeks prior to the meeting, date TBC. We

like to have an active and effective committee, so unless you are willing to give up some time for free and act in the best interest of the club, do not apply!!

Membership - Renewals are due on 1st November; there will be no increase in the price again, aren't we good to you!! Any new memberships received during the month of November will be exempt from the new member's fee of an additional £2.00, so get those new memberships in! We will be holding an open day, following the success of last years open day, on Saturday 30th October, with live music from 12 – 12.

Entertainment & Food - We have coffee mornings with yummy cakes and pastries on Wednesday & Friday mornings 9.00 – 11.30 watch our notice boards inside and outside the club, for future events and food availability. Tuesday Night is Jools's Fajita Night & also quiz night with Duncan, cash prize for the winner.

Future Events

Sat October 9th – Charity Cheque Presentation with Stingray

Sat October 30th Open day, music from 12 – 12

Sat November TBC – Murder Mystery Dinner

Sat December 4th Christmas disco 70's style

Sun December 5th Children's Christmas disco

Sat December 18th Christmas draw with Run For Cover

Fri 24th December Christmas Eve disco, children welcome until 9.30pm

Groups/Teams within our club - Bowls, Darts, Snooker, Crib, Pool, Tennis, Quiz Nights, Happy Folks Club (over 60s)

Waterbeach United Charities (Reg No 201528)

Waterbeach United Charities provide financial support or pays for services that help to alleviate individuals who are "in need or distress" who are residents of Waterbeach Parish.

Electric Wheelchairs - We also continue to provide electric wheelchairs for those in need. If you would like to be considered please let us know.

Distress Grants - The Trustees would like to hear from individuals who may be IN NEED OR DISTRESS. If you think we could help, and to find out whether you are eligible for assistance, whether it be loaning equipment to you, or providing financial support, please contact:

All personal applications are confidential.

The Secretary, Waterbeach United Charities,
25 Payton Way, Waterbeach, Cambridge CB5 9NS

Toddler Playgroup



The summer term was fantastic, with successful school trips and lots of outside play. The children were able to enjoy the water tables and the bikes as well as creating artwork on the paving with multi-coloured chalk and the usual arts and crafts. We are looking forward to the new school year, with full enrolment in the mixed sessions, meaning that more and more families are enjoying what the playgroup has to offer. We are particularly looking forward to the Nearly New Sale on Saturday November 13th 2010, 1-3pm in the school hall. Please, if you have any good condition clothes, toys, nursery items and more, think about selling with us!

Our team is led by Wayne Badcock who is assisted by Lesley Moxon, Tricia Palmer, Gina Clark and Ceri Hill. The team between them have clocked up 40 years of service at Waterbeach Toddler Playgroup.

Waterbeach Toddler Playgroup has been running for over 20 years, and we are based down Burgess Road (off Way Lane). Children are welcome from aged 2 ½ to 4 (pre-school year). We offer specialised pre-school sessions on a Monday and Wednesday afternoon from 12.00 till 3.00pm, with sessions for the younger age group (2 ½ - 3 ½) from 9.00 till 11.30am on Monday and Wednesday mornings. On Tuesday, Thursday and Friday mornings we hold mixed sessions, which are open to both age groups, from 9.00am till 12.00pm (with optional lunch sessions from 12.00 till 1.00pm at a small extra charge). Thanks to Nursery Funding money from the government, our fees are free to parents from the term after your child is three. Committee members, staff, and parents are always happy to talk about their experiences of the playgroup, and our door is always open to parents wanting to have a look around, just turn up during one of the session times listed above. Alternatively you can contact Wayne Badcock on 07808357729 or wayne@waterbeachtoddlerplaygroup.org.uk.

Cambridge Cancer Walk (4 or 12km)



Sunday 3rd October 2010

10 am start

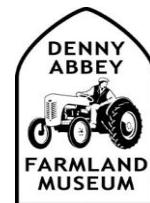
A sponsored walk starting from Milton Country Park, near Cambridge
Money raised from the Cambridge Cancer Walk will help fund vital research at the Cancer Research UK Cambridge Research Institute

Web: <http://supportus.cancerresearchuk.org/cambridgecancerwalk>
or through www.cancerresearchuk.org & click on 'Join a fundraising event'

Tel: 07729 191811 E-mail: cambridgecancerwalk@hotmail.co.uk



The Farmland Museum



Autumn events at the Farmland Museum, Denny Abbey.

September 26th, 10.30-5pm - Harvest at Denny

A day of food, drink and merriment with The Friends of The Farmland Museum. Event Admission Prices: Adults £5, Concessions £4, Children over 5 £3

October 10th, 10am-1pm - Life Drawing Workshop

Tutored life drawing class with professional model. Suitable for all levels from beginners to more advanced. £13 with tea and coffee included £16 with pre-booked lunch (filled roll and slice of cake) Tel: Laura Pearson on 01223 860988, write: The Farmland Museum, Denny Abbey, Ely Road, Waterbeach, Cambridge CB25 9PQ, email: admin@farmlandmuseum.org.uk

October 28th, 12-4pm - Paper Pumpkins

Create Hallowe'en decorations ready for the big day

Drop-in Children's Holiday Activity Day at the Farmland Museum and Denny Abbey. These informal days run by the education department during the holiday are aimed at children who are 4+ and accompanied by an adult. 12-4pm. Adults £4, Concessions £3, Children over 5 £3. No need to book.

October 31st, 10.30am-4pm - Hallowe'en at Denny

Pumpkins galore at our final farewell event of the season. Apple bobbing, Pumpkin Carving (50p per pumpkin) and a Hallowe'en Trail – Follow the clues and collect spooky images to make a ghoulish Garland. Event Admission Prices: Adults £5, Concessions £4, Children over 5 £3



Jazzercise

Yes we are on your doorstep! Why not come and have a fun filled workout whilst reaping all the benefits Jazzercise has to offer for all fitness levels.

Classes Tuesdays and Thursdays 6.45pm and 8pm and Saturdays 10am at Waterbeach School. Come and have a free trial class.

Burn up to 600 calories in one powerfully effective 60minute workout. Start dancing yourself fit! Check out all the details on www.jazzercise.com

Wicken Fen

The opening of the new Reach Lode Bridge and Burwell Fen cycleway was marked with a Community Picnic and BBQ on 12 September. The bridge

and cycle way are key elements of the Lodes Way linking Wicken to Bottisham, being developed in partnership with sustainable transport charity Sustrans, via a £50 million grant from the Big Lottery Fund's Living Landmarks. A leaflet on the Lodes Way is available from the Wicken Fen Visitor Centre or can be



downloaded at www.wicken.org.uk In the longer term we are keen to eventually develop a link across to Waterbeach via Bottisham Lock, to connect up with National Cycle Route No.11

Planning approval was received at the beginning of September for the construction of a low level clay bund enclosing 74 acres of Burwell Fen, this will assist the creation of mixed wetland habitat through the shallow, seasonal inundation of the enclosed area. The bund will have a maximum height of 650 mm above the surrounding ground level and once it has been re-colonised by grasses and reeds will not easily be noticeable in the landscape, in fact the new cycleway runs along the Eastern end of the bund.

In August we were delighted to learn that we are to receive a grant of £224, 583 from the WREN Biodiversity Action Fund. Wicken Fen was one of 10 projects nationwide to receive grants totalling £2 million aimed at helping to achieve the UK's ambitious biodiversity targets. Wren (Waste Recycling Environmental Limited) is a not for profit business that helps benefit the lives of people close to landfill sites by awarding grants for community, conservation and heritage projects. A significant element of the grant will be spent on the Burwell Fen habitat restoration project mentioned earlier, new equipment and will help fund a new Warden post.

With the summer holidays over we are looking forward to our autumn programme of events especially our first ever Scarecrow Festival and competition over the weekend of 23-24 October. There are three competition classes: Individual – Under 11s, Individual 11+ (incl adults) and Groups (School classes, toddler groups, clubs, WI or Scouts, Brownies, Guides etc). You can choose any theme suitable for a family audience, although extra marks will be awarded for local relevance, such as fen characters or animals.

Please bring your entries along to the Wicken Fen anytime from 10 on 22 October where you will be given a competition number. The scarecrows will be displayed in Fen Cottage Garden, along the trails and picnic area during the festival.

Other events during autumn include; Mucky Pups – pre-school fun for little fairies (18 months- 4 years) Thurs 14 Oct 1030 -1200; Half Term at Wicken Fen– follow our wildlife murder mystery trail, Mon 25 –Fri 29th; Winter Wildlife, make bird feeders and food to help your garden birds through the winter months – Tues 26th ; Batty Halloween – come along in your spookiest outfit for some ghostly goings on Fri 29th; Ghost Walk (7+ years only please) Sat 30th 1830- 1930.

In November we have Mucky Pups, pre-school fun for little pirates Thurs 11 1030-1200; Winter Wildlife Walk Sat 13th and Sun 28th 1000 – 1300; Christmas Decorations Workshop – use rush and willow to make rustic decorations for your home and Christmas tree Sat 13th 1000-1300 or 1400 - 1700, Christmas Wreath Making Sat / Sun 27 & 28th 1000-1230 or 1330-1600. Information and tickets for all events (early booking advisable) available on 01353 720274

Message From Cllr. James Hockney

It continues to be a real privilege to be one of your District Councillors. Many of you have contacted me with problems and issues to address. I will always do my best to help. My contact details are listed below if you need to get in touch with me.

Waterbeach safer crossing - I remain totally committed to making crossing the road safer by the Village Stores/Pharmacy. A real step forward was taken when three Highways officers came out to meet myself, Councillor Johnson, your County Councillor and Parish Highways Chairman.

From this meeting Highways will produce revised plans for improving road safety around the Village Stores/Pharmacy area. These plans should be ready by the end of the year.

New Chief Executive at South Cambs District Council - I am pleased to report that Jean Hunter, from Lancashire, has been confirmed as the new Chief Executive for South Cambridgeshire District Council. Jean comes to us with a very impressive track record including: served as Chief Executive of South Ribble Borough Council in the last 10 years, served as Chief Executive at East Hampshire District Council prior to joining South Ribble, worked in the private sector for companies including Granada Television, Beecham Consumer Products and Hay Management Consultants.

I would also like to pay tribute to the outgoing Chief Executive, Greg Harlock. He spent more than 40 years in local government. Greg was a hard working, approachable Chief Executive and certainly leaves the Council in a better position than when he arrived.

Blue bin recycling from October - From October, South Cambs District Council will be expanding local recycling. The existing green box scheme is to be replaced with a blue wheeled bin with a specially designed inner caddy for paper. More information on this can be found in the South Cambs magazine, although by the time you read this article you will have hopefully received the blue bin and information pack.

In the new blue bin you will be able to recycle a wide range of everyday plastic packaging items such as plastic food trays, yoghurt pots and margarine tubs, in addition to cartons/tetra packs. It will be possible for residents to recycle up to 90% of their household waste which is an exciting step forward.

Visit to Emmaus Landbeach - I was pleased to go on a tour of Emmaus Landbeach with Councillor Peter Johnson to find out more about them and what they do.

Emmaus Cambridge was started in 1990 to help people to move on from homelessness. The community has gone from strength to strength, becoming fully self supporting through the hard work of companions, (those living in the community), and staff, by collecting, refurbishing and selling furniture and other household goods in their shop.

The charity now has 19 communities across the country.

Concern over Bus Service - Many residents have raised concern about service issues with the local bus service. These complaints include buses either turning up late or not at all.

The 'Better Bus Service' campaign petition showed that residents want a more regular and reliable service. A total of 1070 residents signed the petition. If you have experienced any problems please let me know.

Please contact me if you need to raise any local issues:

Tel: 01223-864891 or 07958-389713 E-Mail: j_hockney@btinternet.com

Gardening Club

The 25th Anniversary celebrations continued through the sunshine. The Feast theme was 'Dig for Victory' and the stand was kitted out with 1940's spades, forks, the



'Famous Original Mick Howe Hoe - only two new heads and four new handles' rakes, trowels, sickles and billhooks and other hand tools. The stand presented the village with a superb collection of flowering plants, fruit bushes and vegetables for purchase – all donated by the membership. The whole event was regarded as a winner and our thanks go to the organisers of the Feast for a 'Grand Do'.

The 25th Anniversary was celebrated on a glorious summer evening at the gardens of Madingley Hall. Our old friend the Head Gardener, Richard Gant took us on a tour of the gardens which were in fine order – great plantings and trees to die for. The evening was completed in the refectory with refreshments and a superb Anniversary cake.

The outdoor jollies continued with a Saturday visit to Hatfield House, Gardens and Park. The gardens were full of superb plants; of special interest were the blue sea-hollies combined with borders of lavender which were covered with blossom and hundreds of bumble bees. The trees were surviving the dry conditions well and as an interesting addition there was an exhibition of Art in the Garden.

Before the preparations for the Annual Show, time was found for a Sunday lunch-time barbecue in a member's garden adjacent to the Green. The weather was kind, the gazebos did not blow away, the chefs did not throw a 'Ramsey' and the many varied salads and delicious desserts were enjoyed by all.

The most recent event was the Annual Show on Saturday 4th of September at Waterbeach School. Our thanks also go to Waterbeach School for organising a poster competition to celebrate the 25th Anniversary. The two winners, Emily Rutherford and Izzy Ratsey-Woodfoffe were given their prizes in the Ring at the Feast, and their artwork was used in the final versions. The runners-up were Olivia Wells, Jessica Whitely and Zack Pennock.

Future Events:

Thursday 21st October AGM and talk by Herbie Collen 'My Secret Garden'

We welcome all with an interest in gardening – please come along.

A View From Shire Hall

We all know that cuts are coming and the County Council is doing a lot of work to try to anticipate some of the effects on provision of services. Two of the areas that have so far been looked at are the Youth Service and Libraries.

Youth services - The County Council is aiming to reduce the Youth Service budget by £1 million over the next two years. This is from a very low base, and the cuts are bound to have effects locally.

One of the ways in which the cuts are being implemented is to target the County's limited resources on areas of greatest need. Because of this, Waterbeach is bound to lose out against other areas in the County where levels of deprivation are much higher. I have real concerns about how this might affect the excellent work being done by WAY in our villages, and I shall do all I can to support them in their work and try to ensure that this vital service is not damaged.

Libraries - The problems of library funding have reached the national press, and there have been discussions about using more volunteers to provide services. In Waterbeach, we already do this, and the excellent work of the volunteers at WILL is well-known. It looks as if this model might be one that is followed in more areas of the County as the Council tries to maintain services at much lower costs. However, it is vital that support is not reduced and there have been worrying signs that some of the services such as access to new books will be withdrawn from Waterbeach.

Can I help? - I am available to help anyone with any issues relating to the above matters and to any other matters within the County Council's remit. You can contact me via my website, www.michaelwilliamson.org.uk or by phone on 860899. I look forward to hearing from you.

Michael Williamson

County Councillor for Landbeach, Waterbeach and Milton

Local learning disability charity needs volunteers

Cambridgeshire Mencap is looking for volunteers to help people with a learning disability.

You can make a big difference in a person's life just by going with them to see a film, helping them to go bowling, or just popping round for a cup of tea and a chat. Just having someone to do these things with can help the person to build their self-confidence, interests and independence.

If you could spare just a few hours one evening every month then you could be doing something new, or something you already do and enjoy, whilst making a BIG difference in a person's life.



To find out more contact Rob Wallace on 01223 883140 or email
robert@cambridgeshiremencap.co.uk



To meet some of the people we support visit us at www.cambridgeshiremencap.co.uk

Waterbeach Community Players

Rehearsals are well underway for our November production of *We Found Love And An Exquisite Set Of Porcelain Figurines Aboard The SS "Farndale Avenue"* by David McGillivray & Walter Zerlin Jnr.

One of a series of plays about the (mis)adventures of the Farndale Avenue Housing Estate Townswomen's Guild Dramatic Society as they attempt to entertain an audience with their latest self-penned masterpiece.

This one is a romance set aboard a shipboard cruise ship back in the swinging twenties. Or, at least, it would be, if the cast could stop bickering amongst themselves, the stage crew could pick up their cues and any of the actors could remember what they were supposed to be doing or saying on the stage.

Despite that, they struggle through the plot: Constance, sailing to Naples to marry Beauregard, meets up with childhood sweetheart Noel. As Beauregard is secretly also on board, the ensuing love triangle develops on the voyage, inevitable shipwreck, sojourn on a desert island and eventual rescue. Nobody is quite sure how it finishes, though: that part gets rather overlooked amidst the chaos.

It's a comedy, by the way!

Directed by Julie Petrucci, the cast includes Caroline Blair, James Dowson, David Morris, Cath Perkins, Jane Stewart and Rosie Wilson.

Come aboard at Waterbeach School between 10 & 13 November 2010
Sailing at 7.45pm.

Tickets £7.50 (concessions £6). Advance Box Office Box Office 01223 570109 or email wcpticketline@btinternet.com.

Tickets will be on sale at the door subject to availability.

Advance Notice - Our 2011 panto is *Jack and the Beanstalk*. Performances at Waterbeach School 20 - 22 January 2011. Auditions 13 October.

More information from 01223 880023.

Blue Bins

Households across South Cambridgeshire will be taking delivery of their new blue bin between 31 August and 6 October. The blue bin will replace the green box scheme and be an easier and cheaper way of collecting dry recyclables. Collections will take effect from Monday 11 October.

Improvements to the recycling service take on board the comments of residents who want to be able to recycle a greater range of materials in a single, larger, easier to use container. The new blue bin will enable

households to recycle up to 90% of their rubbish, meaning less waste will go to costly and ever-decreasing landfill.

The new service will also prove a more cost-effective way of collecting and recycling waste with an estimated saving of £400,000 by the third full year of operation.

On delivery, residents are asked to be aware that the blue bin lids may not close properly due to the way in which they were stacked for storage. The lid should settle after a week or so.

The blue bin will be for the dry recyclables that residents currently place in their green boxes, including plastic bottles, glass bottles and jars, and food and drinks cans, as well as new materials, including plastic pots, tubs, trays, film (e.g. carrier bags and clean food wrapping) and cartons (e.g. tetra packs). Residents will also now be asked to place cardboard in the blue bin for recycling, instead of in the green bin for composting. Items must be placed loose in the blue bin (not in plastic bin bags or other containers) and should be rinsed to remove any risk of food contamination.

The blue bin will come with an inner caddy specially designed to keep paper (which includes magazines, directories, envelopes and junk mail) separate from the rest of the recycling. This is because paper is more valuable when it is kept separate. Residents are asked to keep the caddy in the blue bin as it prevents people from heavy lifting and does not need to be removed.

The blue bin will be delivered with an information pack, which will be placed in the caddy, giving residents all the information they need about the new recycling service. In the pack residents will find a battery bag for recycling domestic batteries. This will need to be put out for collection with the blue bin and will be replaced each time it is used. There will be clear instructions on the bag to demonstrate how it needs to be attached to the bin.

If residents successfully manage to fill their blue bin, excess dry recyclables will be collected when placed in a returnable container and left alongside the bin. Similarly, excess paper will be collected when kept separate and left in a returnable container alongside the blue bin.

The green bin will continue to be used for garden and food waste. Residents are asked not to put cardboard and paper in the green bin any longer and to put this in the blue bin for recycling instead. The black bin will now only be for waste that cannot be recycled or composted. Excess black and green bin material cannot be collected. Residents are asked to take it to the recycling centre at Milton or Thriplow.

Portfolio holder for environmental services Cllr Sue Ellington said, "We hope that residents will be pleased with the improvements to their recycling service and that they will embrace the opportunity to recycle as much as possible. The idea is that the blue bin will become the main household bin

with little non-recyclable and non-compostable material left for the black bin and, subsequently, landfill.

“We are very proud to have one of the best recycling rates in the country and are keen to continue to listen to and work with residents to better our record further.”

The majority of residents will not experience a change to their collection day. The only residents that will see a minor change are those in Toft, who will receive the necessary information before their first collection. There may, however, be a small change to the time of some collections so residents are reminded to ensure their bins are out by 7am on their designated day of collection.

Residents are welcome to keep their green boxes if they have a use for them. For those residents not wanting to keep them, there will be drop off points at Morrisons Cambourne, Tesco Bar Hill, Tesco Fulbourn or Tesco Milton where they will be picked up and sent for recycling.

If residents have not received their blue bin by Wednesday 6 October they are asked to contact the Council on 03450 450 063.

Blue bin collections will replace the green box collections. They will, therefore, need to be put out on the same day as the green boxes would have been – the same day as the green bin.

For more information residents are asked to visit www.scams.gov.uk/bluebin or to call 03450 450 063

Landbeach Music Nights

On the first Friday of each month, Landbeach Sports & Social Club hosts a ‘Music Night’. This is basically a ‘jam session’, although performers/bands are welcome to play a full set. All styles of music are catered for, ranging from acoustic folk to heavy rock to sixties covers and some original material. There is a drum-kit and PA provided and the services of a sound engineer to keep the technology in check.

These nights have been going on for over a year now and are proving very popular. There is a hardcore of regular players, who are joined by occasional visitors. Some performers treat it as an ‘open-mic’ night and, having learned a particular song, get up and sing, whilst backed by a ‘house-band’. The ages of players range from 11 to 81 (so far) and everyone is encouraged, be they highly accomplished or raw novices. The audiences are always very generous in their applause and the whole evening is great fun. The Club offers cheap drinks, a friendly and comfortable atmosphere and real ale from ‘Milton Brewery’. Everyone is welcome to come along.

Request For Volunteers



Denny Abbey and Farmland Museum is on the lookout for volunteers to help work with children. This might involve helping out with Children's Activity Days, which are usually on Thursdays during the Summer holidays; Special Event Days, which take place at weekends, once or twice a month during the season; and educational visits by school groups during term times.

We are looking for people who would enjoy working with children in a fun, relaxed, and purposeful atmosphere, who would be prepared to volunteer on a regular basis (though this is unlikely to be more than 1 to 2 days a month), and who would be confident in working with groups on their own.

Activity and Special Event days usually just involve helping children and families with 'make and take' activities. For school sessions, thorough training and induction will be provided, and volunteers will only be given tasks they feel confident with. The groups would usually consist of less than 15 children, generally aged between 5 and 11. A CRB check would be carried out by the Museum, as standard practice.



If you would like to find out more about this opportunity, please contact

the Education Officer at the Museum, Chris Leuchars, on 01223 860988, or email education@farmlandmuseum.org.uk . More details about Education at the Museum can be found at www.dennyeducation.co.uk

Filming At Clayhithe

You may be aware that we have been filming a feature film at Riverside House on the Clayhithe Road. The film is called *Dimensions: A Line, A Loop, A Tangle of Threads*, it is a feature film about a brilliant young man who becomes obsessed with mathematics and the concept of manipulating time. The film is primarily set in the 1920s-1940s and is currently being shot in Cambridgeshire.

Ant and Sloane Neely, the husband and wife team behind the movie say:

"Several months ago, we decided to move from working on other people's films, to finally making our own. We knew that the only realistic way we could make our own feature was to sell our house in Twickenham to fund it. Obviously, this isn't exactly the smartest financial decision, but we are looking at this as more of a 'life' decision. We could always talk about making 'our' film, or we could actually go for it."

Ant has written the script and Sloane is directing the film. Sloane's background includes Art Direction on *Six Feet Under*, *Batman* and *Harry Potter*. Ant is a Writer and a Music Composer. The main filming unit has been at the beautiful *Riverside House* (a family member's) location other Cambridge locations have included *Downing College* and *Wesley House, Jesus Lane*.



The Bridge Pub (several of the staff appeared as extras)

Amongst the films stars are three local children from Cambridge schools and drama groups. Also in the cast are Patrick Godfrey (the *Duchess*, *Everafter*, *Room with a view*) Camilla Rutherford (*Gosford Park*, *Rome*), Henry Lloyd-Hughes (*Harry Potter*, *The Inbetweeners*) and Olivia Llewellyn (*The Boat that Rocked*). Locally based actor Richard Heffer one of the stars of the 70s TV series *Colditz*, is also among the cast.

Along with our industry professionals we also have many students on work placements from the drama and film courses at Anglia Ruskin University. The local companies that have supported us in our film-making have included *Classworks Costumes*, the *Cambridge Flying Club* and the *Cambridge Sailing Club*.

We have also been incredibly fortunate to have had support from the *Waterbeach community*: filming scenes at the *Bridge Public House* and being catered for every day. Michael and Gail of *Bannold*



Garden Party (with Waterbeach Players as extras)

landscapers kindly allowed us to use their vintage van. The *Waterbeach Community Players* were background artists in the *Garden Party* scene and *Shaun of Proctor's upholstery* kindly provided us with fabrics.

A Stroll In The Park

The Cambridge Branch of Hearing Dogs for Deaf People is organising a sponsored stroll in Milton Country Park on Sunday 10 October from 10.00 am until approximately 3.00 pm. We would like to encourage people from Cambridge and the surrounding villages to come along with their dogs and families and enjoy a walk whilst raising much-needed funds for this very worthwhile cause. We will present medals to those who complete the course and there will be a treat for dogs at the finish point. On the day there will be a giant tombola, Hearing Dogs merchandise, puppies in training, working partnerships and much more. There is an excellent café where, after your walk, you can sit back and enjoy some refreshments or alternatively stock up at the café before you start so that you can enjoy a picnic en route. There are plenty of seats along the way so that you can stop and enjoy the scenery and all that the park has to offer. The routes will meander along paths beside the lakes where, at the time of writing, there are swans, cygnets, ducks and ducklings to be seen. Despite the proximity to the A14 there is a very tranquil atmosphere and the site is very child and dog friendly. The routes of 2 miles and approximately 5 miles will be well marked and maps will be available. The majority of the route is very wheelchair and pushchair friendly and is generally flat. Dogs and accompanied children will be very welcome. Cost per participant is just £2.00 but we hope that many walkers will obtain sponsorship to increase the amount raised for the charity. We would very much like this to be an annual event so please do come and support us. For further details, or to obtain entry and sponsorship forms please contact Jenny Parker.

Email contact: jennifer.parker5@btopenworld.com
or 01223 833562 (telephone evenings only please)

Waterbeach Surgery INFLUENZA CLINICS

1st 14th 29th October and 5th November 2010

**If you are over 65 years
or have**

Diabetes, Poor Immune System, Chronic – Lung, Heart, Kidney or Liver disease

Please book an appointment.

Books open for 1st Oct on 7th September

And from 14th September for the remaining clinics

Waterbeach Surgery

Dr Machen Dr Burrell Dr Howard

Rosalind Franklin House Bannold Road Waterbeach CB25 9LQ

01223 860387 Fax 01223 576259

Children's Page

Thank you to Ryan and Victoria Graves for this lovely picture of an autumn scene.

You could make a hedgehog like the one in the picture, just follow the instructions below.



Hedgehog Craft



A fun way to use up those empty horse chestnut shells. Watch out for the prickles!

You will need:

Horse chestnut shells

Air drying clay

Acrylic varnish (optional)

You will need to find a good brown shell with lots of prickles. Take a small piece of air drying clay and shape it to form the hedgehog's short legs and pointed snout. Use a pen to make indentations for his eyes.

Once the clay is dry, apply a coat of varnish to give your hedgehog some extra protection if you wish.

Do you have something for the Children's Page? Please send in your stories, poems, pictures and comments. Email your article to beachnews@waterbeach.org or send to 5 Spurgeons Avenue, Waterbeach, Cambridge CB25 9NU.

COMMUNITY ASSOCIATION MEMBERS

1ST WATERBEACH BROWNIES	Rowena Small - 01223 570850
1ST WATERBEACH GUIDES	Lorraine Warburton - 01223 575792
1ST WATERBEACH RAINBOWS	Diana Morgan - 01223 861398
32ND CAMBRIDGE (WATERBEACH) SCOUT GROUP	Bill Moon – 01223 440259
BEACH BOWLS CLUB	Tony Reuben - 01223 861001
BEACH SOCIAL CLUB	Richard Hall - 01223 860033
BUCHANAN CHILDREN'S CENTRE	Caroline Osborne - 01223 204435
CATS PROTECTION - CAMBRIDGE BRANCH	Information Line - 01223 441880
COMMUNITY ASSOCIATION CHAIRPERSON	Jacqui Rabbett - 01223 860993
COMMUNITY ASSOCIATION SECRETARY	01223 860993
COMMUNITY ASSOCIATION TREASURER	Mike Sharp - 01223 862969
HAPPY FOLKS CLUB	Mrs A Coxall – 07767 072169
ROYAL BRITISH LEGION	Norman Foster - 01223 474622
ROYAL ENGINEERS ASSOCIATION	Brian Simm - 01487 832982
ST. JOHN'S CHURCH	Revd Lucy Cleland -01223 860353
ST.JOHN'S WIVES GROUP	Sheila Gill - 01223 861999
THE WAY PROJECT	Suzy Kay - 01223 502620
WASPS (WATERBEACH AFTER SCHOOL PLAY SCHEME)	Zoe Palmer - 01223 861140
WATERBEACH & DISTRICT GARDENING CLUB	Peter Dixon - 01223 860280
WATERBEACH BAPTIST CHAPEL	Robin Giles - 01223 862494
WATERBEACH BRASS	David Pell - 01223 860396
WATERBEACH COLTS FOOTBALL CLUB	Lynne West - 01223 440942
WATERBEACH COMMUNITY PLAYERS	Julie Petrucci - 01223 880023
WATERBEACH COMMUNITY PLAYGROUP	Diana Morgan - 01223 861398
WATERBEACH CRICKET CLUB	Chris Nelson - 01223 863346

WATERBEACH DAY CENTRE FOR THE ELDERLY	William Bullivant – 01223 862506
WATERBEACH FOOTBALL CLUB	Tom Lawton - 01223 861025
WATERBEACH INDEPENDENT LENDING LIBRARY	Sarah Smart – 01223 440018
WATERBEACH SALVATION ARMY	Kevin Brown - 01223 506217
WATERBEACH SCHOOL P.T.A	Cressi Downing - 01223 511231
WATERBEACH TODDLER PLAYGROUP	Wayne Badcock - 07808 357729
WATERBEACH VILLAGE SOCIETY	David Craig - 01223 860684
WATERBEACH WI	Jane Gibb - 01223 721194

Other useful numbers:

BEACHES COMMUNITY CAR SERVICE	07807 875878
COUNTY COUNCILLOR	Michael Williamson - 01223 860899
DISTRICT COUNCILLOR	Peter Johnson - 01223 560918 or 07947 475549
DISTRICT COUNCILLOR	James Hockney - 01223 864891
DOCTORS SURGERY – WATERBEACH	01223 860387
FIRE & RESCUE SERVICE - Non Emergency Calls	01223 376217
LANDBEACH VILLAGE HALL	Mrs. Bullman - 01223 860692
PARISH COUNCIL	Sarah Smart - 01223 440018
PARISH PATHS GROUP	D. Armstrong - 01223 861586
POLICE - Non Emergency Calls	0345 456 4564
ST LAWRENCES CATHOLIC CHURCH	01223 704640
VILLAGE CORRESPONDENT	Janice Maltby - 01223 861191
WATERBEACH BARRACKS-STATION STAFF OFFICER	Dave Hornby - 01223 204406
WATERBEACH SCHOOL	01223 718988
WATERBEACH TURBARY CHARITY	Pam Gooding - 01223 861003
WATERBEACH UNITED CHARITIES	Pam Gooding - 01223 861003
YOUTH OUTREACH WORKER	David Beasley - 07790 930191